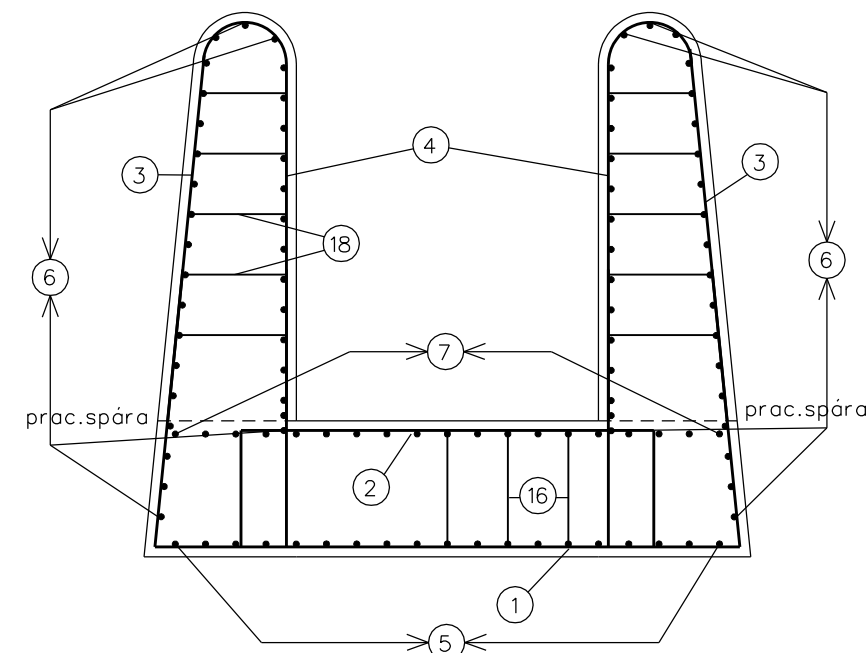
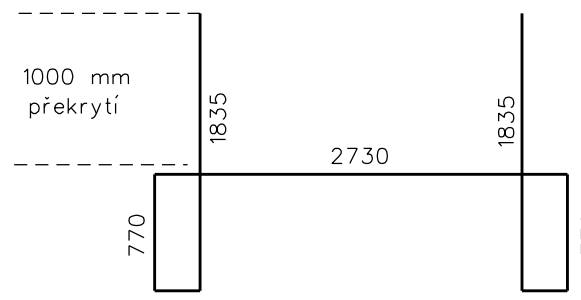


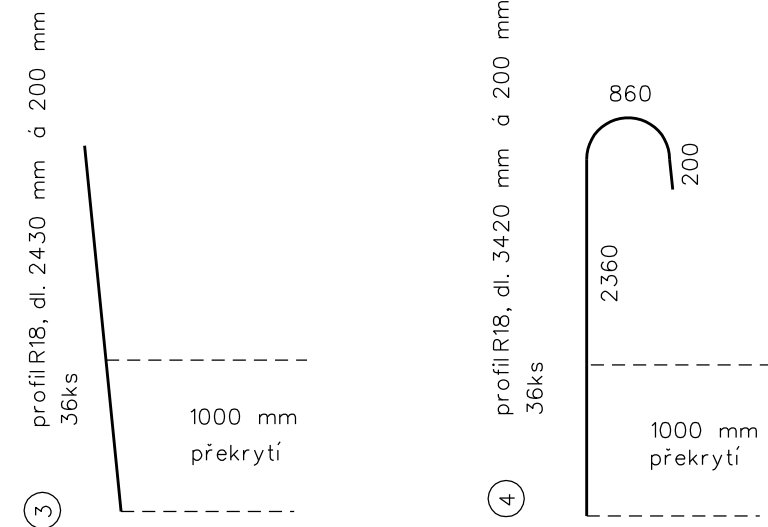
Přelivná část



1 profil R18, dl. 7490 mm á 200 mm 8ks

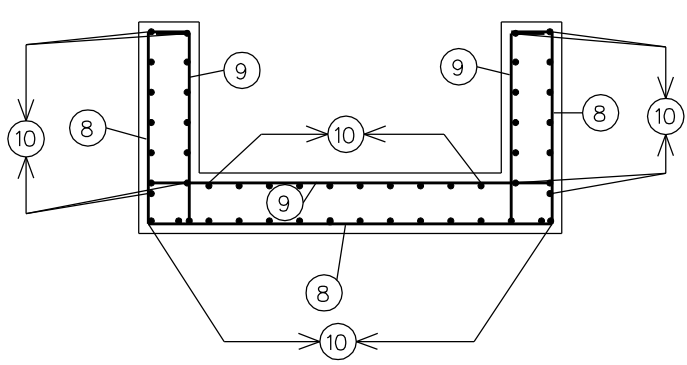
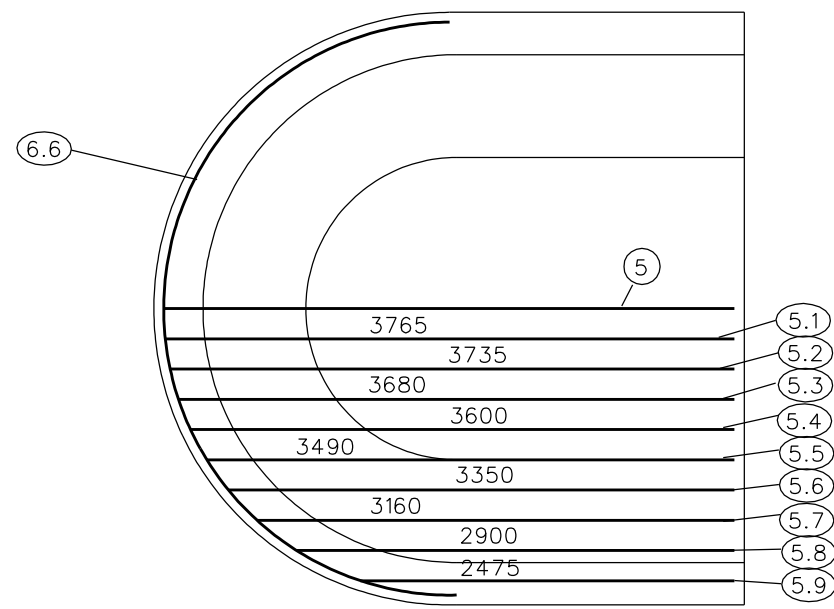


2 profil R18, dl. 8540 mm á 200 mm 8ks

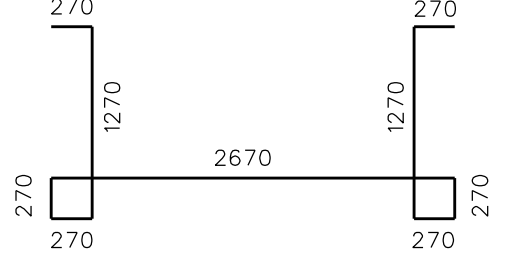


3 profil R18, dl. 2430 mm á 200 mm 36ks

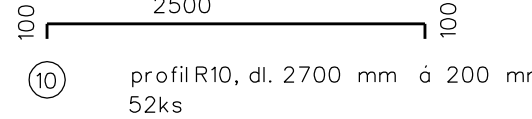
4 profil R18, dl. 3420 mm á 200 mm 36ks



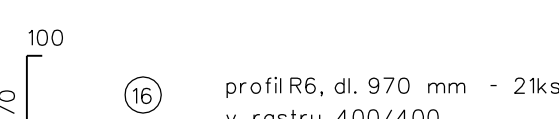
8 profil R12, dl. 5750 mm á 200 mm 14ks



9 profil R12, dl. 6830 mm á 200 mm 14ks



10 profil R10, dl. 2700 mm á 200 mm 52ks



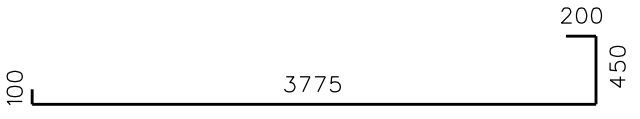
16 profil R6, dl. 970 mm - 21ks v rastru 400/400



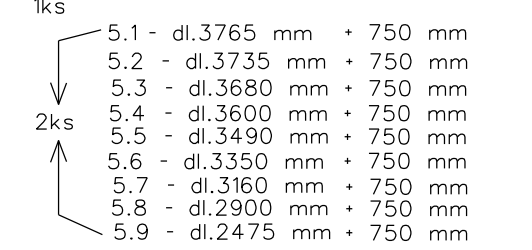
17 profil R6, dl. 570 mm - 27ks v rastru 400/400



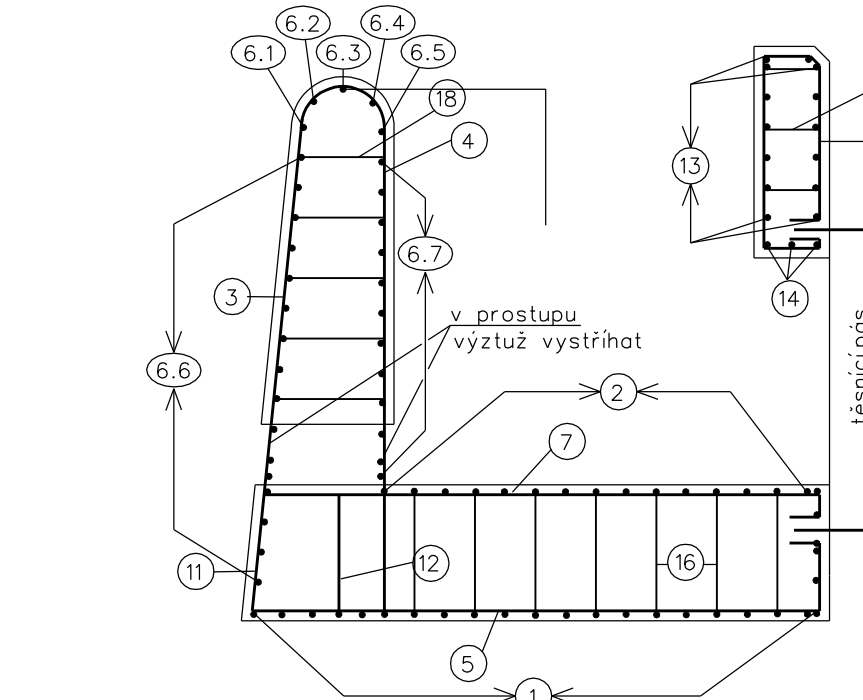
18 profil R6 v rastru 400/400 dl. 770 mm - 21ks dl. 810 mm - 21ks dl. 850 mm - 21ks dl. 890 mm - 21ks dl. 910 mm - 21ks



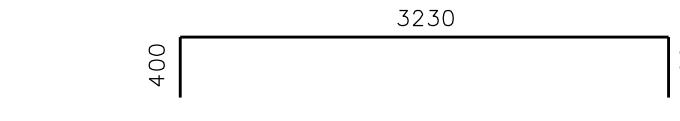
5 profil R10, dl. 4525 mm 1ks



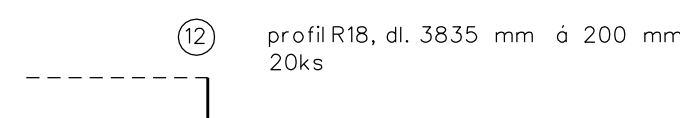
5.1 - dl. 3765 mm • 750 mm 5.2 - dl. 3735 mm • 750 mm 5.3 - dl. 3680 mm • 750 mm 5.4 - dl. 3600 mm • 750 mm 5.5 - dl. 3490 mm • 750 mm 5.6 - dl. 3350 mm • 750 mm 5.7 - dl. 3160 mm • 750 mm 5.8 - dl. 2900 mm • 750 mm 5.9 - dl. 2475 mm • 750 mm



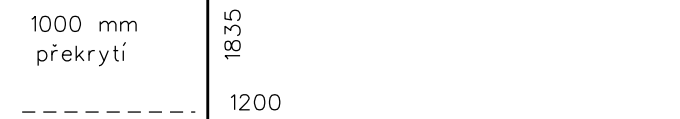
11 profil R18, dl. 3035 mm á 200 mm 20ks



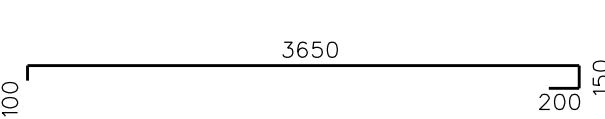
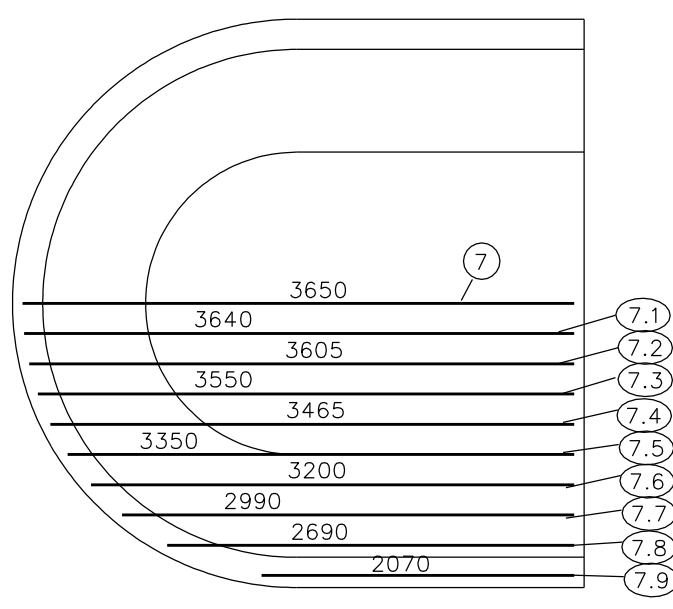
13 profil R10, dl. 4030 mm á 200 mm 14ks



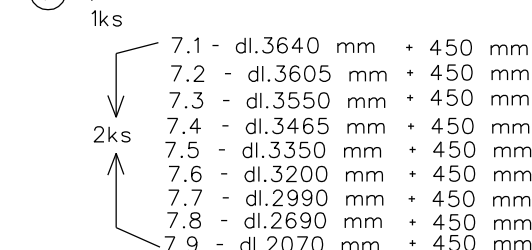
12 profil R18, dl. 3835 mm á 200 mm 20ks



14 profil R18, dl. 4030 mm á 200 mm 3ks

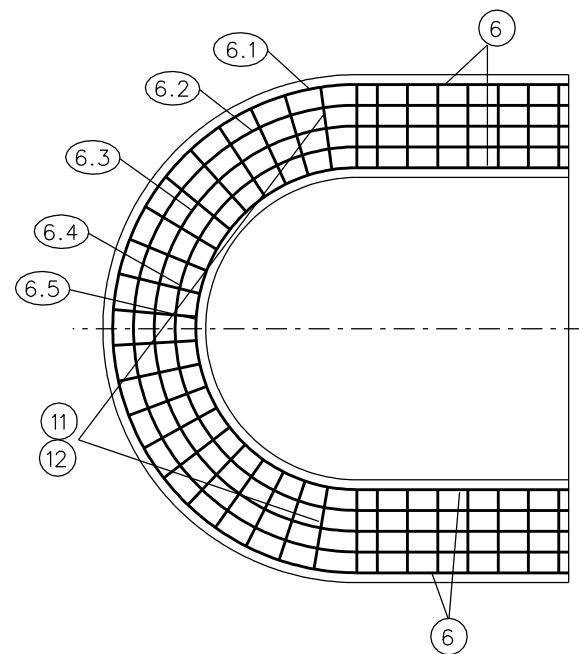


7 profil R10, dl. 4100 mm 1ks

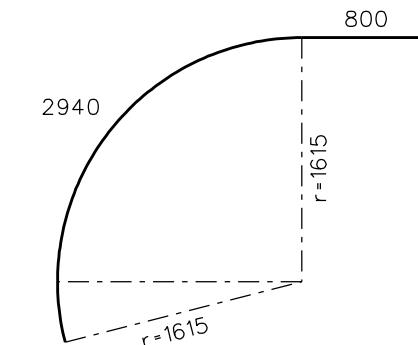


7.1 - dl. 3640 mm • 450 mm 7.2 - dl. 3605 mm • 450 mm 7.3 - dl. 3550 mm • 450 mm 7.4 - dl. 3465 mm • 450 mm 7.5 - dl. 3350 mm • 450 mm 7.6 - dl. 3200 mm • 450 mm 7.7 - dl. 2990 mm • 450 mm 7.8 - dl. 2690 mm • 450 mm 7.9 - dl. 2070 mm • 450 mm

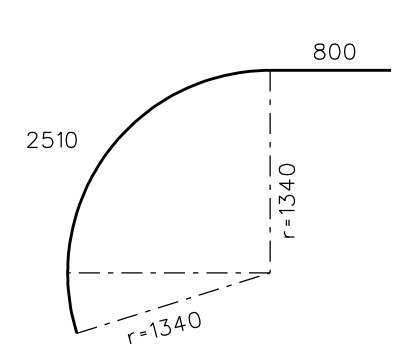
Přelivná hrana - půdorys



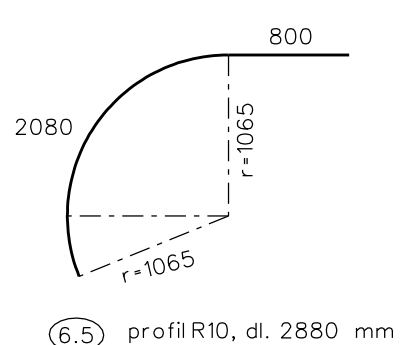
6 profil R10, dl. 1400 mm á 200 mm 2x34ks



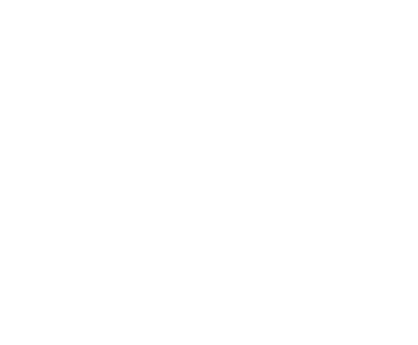
6.1 profil R10, dl. 3740 mm 2ks



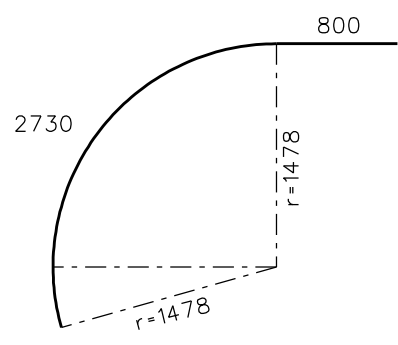
6.3 profil R10, dl. 3310 mm 2ks



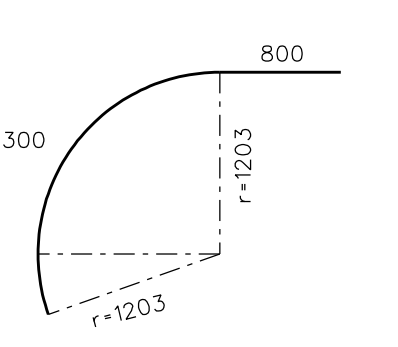
6.5 profil R10, dl. 2880 mm 2ks



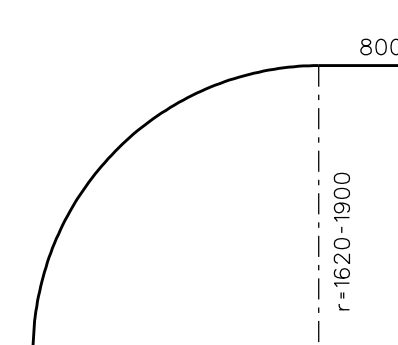
6.7 profil R10, dl. 2880 mm 2x12ks



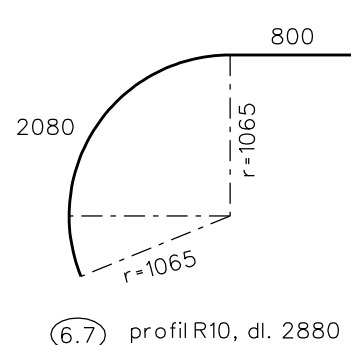
6.2 profil R10, dl. 3530 mm 2ks



6.4 profil R10, dl. 3100 mm 2ks



6.6 profil R10, dl. 3740-4400 mm 2x15ks



6.7 profil R10, dl. 2880 mm 2x12ks

	označení	délka (mm)	počet ks	dl.celkem m	hmotnost m/kg	celkem kg
položka	profil					
1	18	7490	8	59.92	2.000	119.84
2	18	8540	8	68.32	2.000	136.64
3	18	2430	36	87.48	2.000	174.96
4	18	3420	36	123.12	2.000	246.24
5	10	4525	1	4.525	0.617	2.79
5.1	10	4515	2	9.03	0.617	5.57
5.2	10	4485	2	8.97	0.617	5.53
5.3	10	4430	2	8.86	0.617	5.47
5.4	10	4350	2	8.7	0.617	5.37
5.5	10	4240	2	8.48	0.617	5.23
5.6	10	4100	2	8.2	0.617	5.06
5.7	10	3910	2	7.82	0.617	4.82
5.8	10	3650	2	7.3	0.617	4.50
5.9	10	3225	2	6.45	0.617	3.98
6	10	1400	66	92.4	0.617	57.01
6.1	10	3740	2	7.48	0.617	4.62
6.2	10	3530	2	7.06	0.617	4.36
6.3	10	3310	2	6.62	0.617	4.08
6.4	10	3100	2	6.2	0.617	3.83
6.5	10	2880	2	5.76	0.617	3.55
6.6	10	4400	30	132	0.617	81.44
6.7	10	2880	24	69.12	0.617	42.65
7	10	4400	1	4.4	0.617	2.71
7.1	10	4090	2	8.18	0.617	5.05
7.2	10	4055	2	8.11	0.617	5.00
7.3	10	4100	2	8.2	0.617	5.06
7.4	10	3915	2	7.83	0.617	4.83
7.5	10	3800	2	7.6	0.617	4.69
7.6	10	3650	2	7.3	0.617	4.50
7.7	10	3440	2	6.88	0.617	4.24
7.8	10	3140	2	6.28	0.617	3.87
7.9	10	2520	2	5.04	0.617	3.11
8	12	5750	9	51.75	0.888	45.95
9	12	6830	9	61.47	0.888	54.59
10	10	2700	52	140.4	0.617	86.63
11	18	3035	20	60.7	2.000	121.40
12	18	4105	20	82.1	2.000	164.20
13	10	4030	14	56.42	0.617	34.81
14	18	4030	3	12.09	2.000	24.18
15	10	3445	18	62.01	0.617	38.26
16	6	970	21	20.37	0.222	4.52
17	6	570	15	8.55	0.222	1.90
18	6	770	21	16.17	0.222	3.59
		810	21	17.01	0.222	3.78
		850	21	17.85	0.222	3.96
		890	21	18.69	0.222	4.15
		910	21	19.11	0.222	4.24
Hmotnost celkem						1566.79

BETON - C 30/37-XC4-XF3-XA1

OCEL 10 505 (R) krytí65 mm

Vypracoval	Zodpov.projektant	Hl.ing.projektu	Vedoucí oddělení	AGPOL s.r.o.
Opulšilová Alena	Ing. Skácel Miroslav	Ing. Skácel Miroslav	Ing. Vaculík O., Ph.D.	Jungmannova 153/12 778 00 Olomouc Česká republika
Místo stavby	k.ú. Květkovice u Otrokovic	Kraj	Zlínský	Počet formátů
Investor	SPÚ - Krajský pozemkový úřad pro ZK, Pobočka Zlín			10/2019
Alce - objekt	SO 08 Polní cesty a PEO v k.ú. Květkovice u Otrokovic			DSP a R
Příloha	Armovací výkres - přelivná část			2658/060
				2658
				Číslo výkresu
				1:50
				D.2.b.7.1